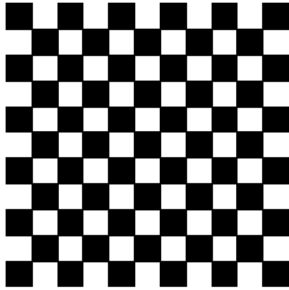


RhinoPhoto Features

1. **Automatic Camera calibration** algorithms : You have to calibrate your camera just



once before using Rhinophoto. Afterwards, the camera calibration file will be loaded automatically and photos will be undistorted (lens distortion corrected) during the process... The calibration process is fully automatic. Print the calibration grid, take several shots of the grid, then run the calibration command.

2 . **Automatic Coded target** detection.

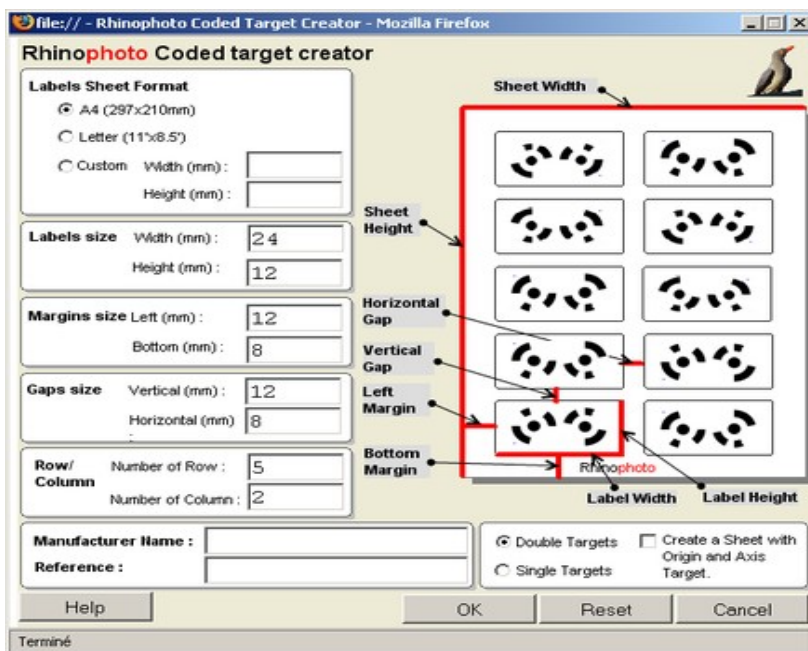
Target detection is automatic, no user intervention required or parameters to set.

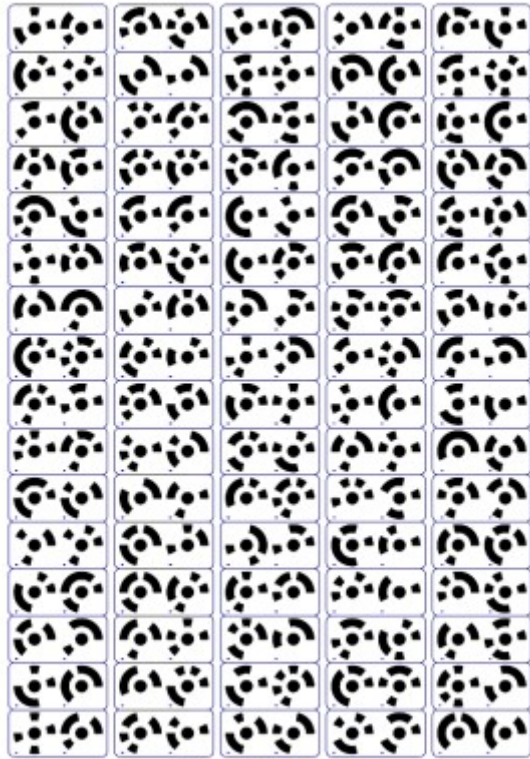
3 . **Automatic reconstruction of points in 3D.**

4 . **Automatic detection of Axis and Reference distances.** Rhinophoto automatically positions and aligns the 3D Scene on the Rhino Axis.

5 . Rhinophoto includes a full featured **RhinoScript** for generating **Customized Target Sheets**. You can design your own coded targets, adapted to your job, in just a few clicks.

6 . Rhinophoto includes also **some Rhino** files to print on standard Avery(tm), Herma(tm).





Rhinophoto H4345 - Sheet 01 -

7 . Rhinophoto works with Eye-Fi Wireless SD Cards.



With an **EYE-FI** Wireless SD Card into your camera, no needs to eject the SD CARD, plug into the computer, search and copy the photos !

Take shots, that's all ! Each photo is treated in real time during the shots. **Rhinophoto** retrieves the photos from the camera, analyses it, decodes targets, and create 3D Points... The 3D scene is constructed in real time. If some photos are unusable, **Rhinophoto** informs you and asks you to take some more shots.

8 . Rhinophoto can directly control* **DYMO 400** and **400 turbo Labelwriters** for an optimized label printing.

